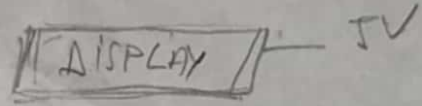
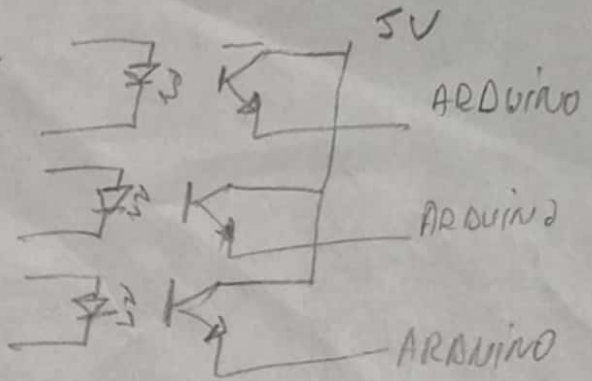


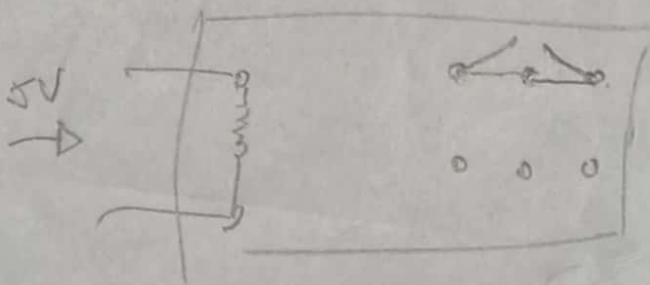
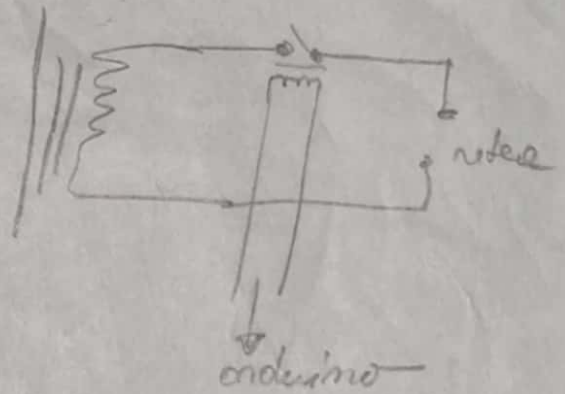
Arduino

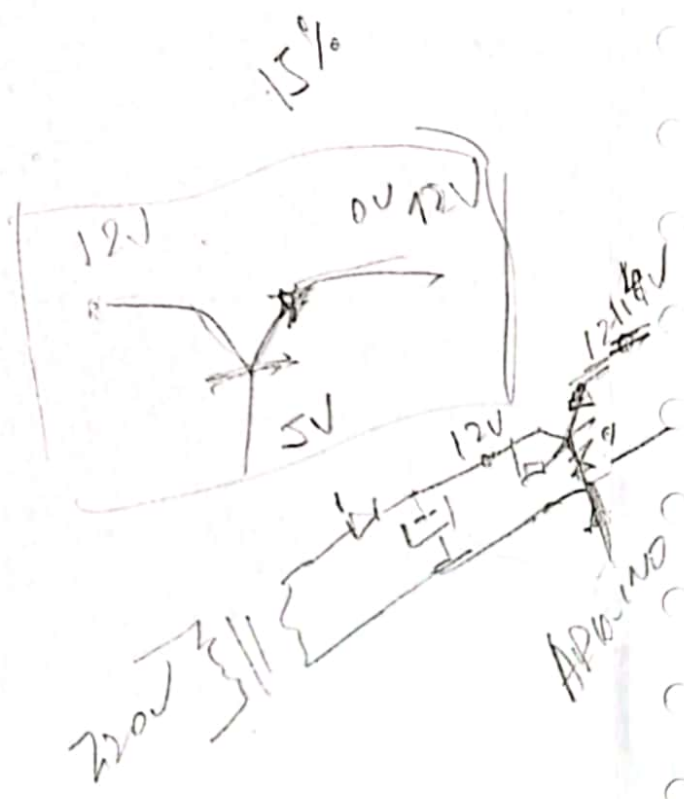
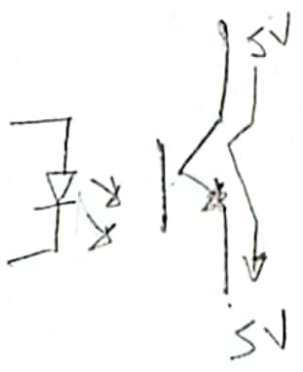
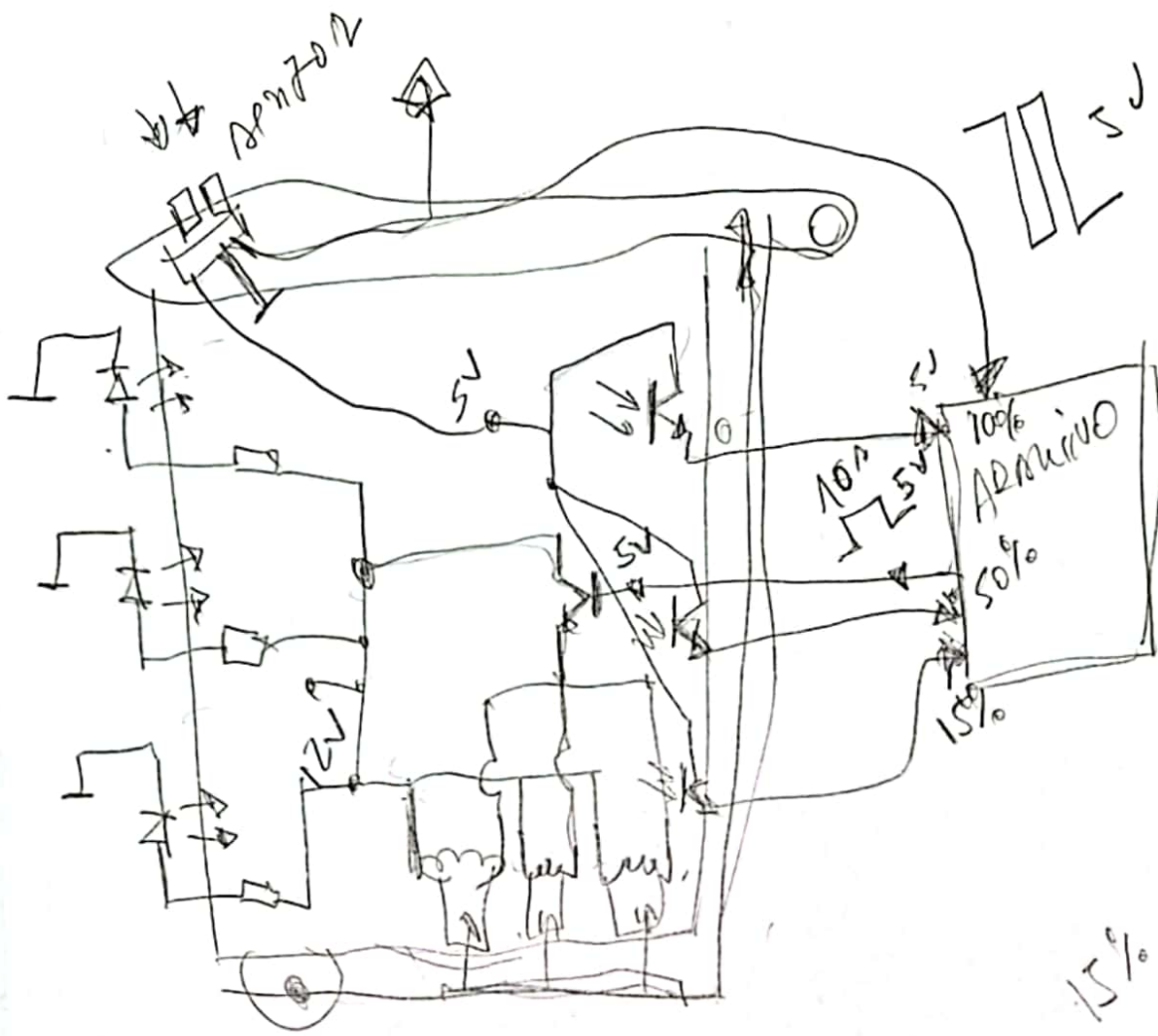


Arduino



Arduino



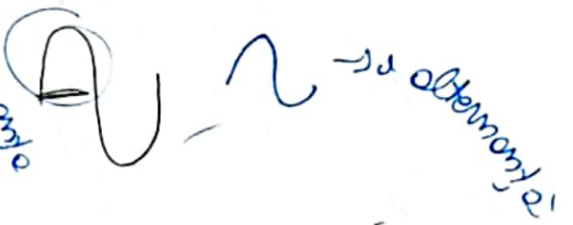


→ redresor monoalternante

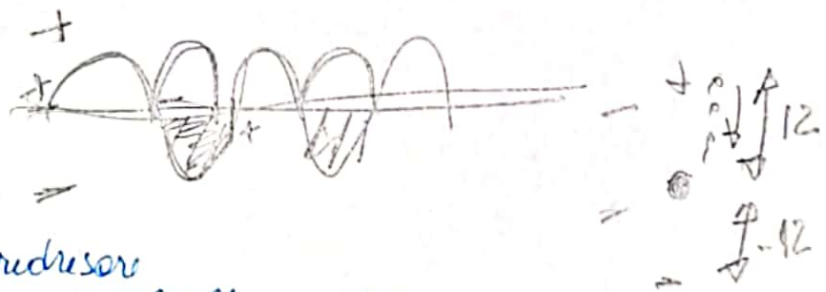
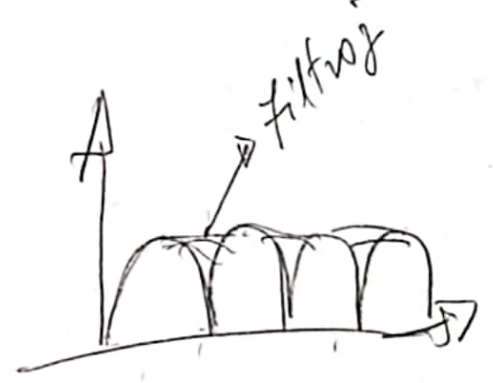
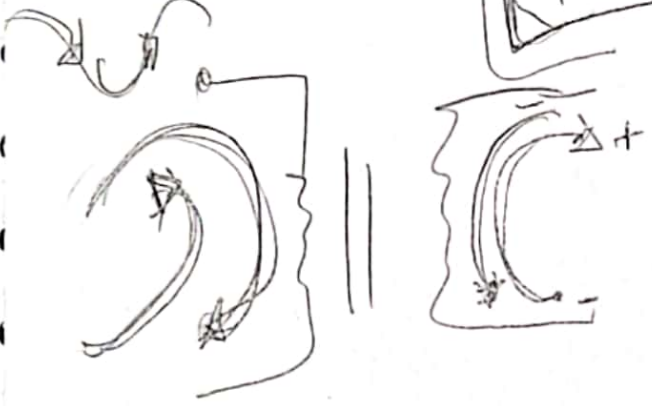


semialternante

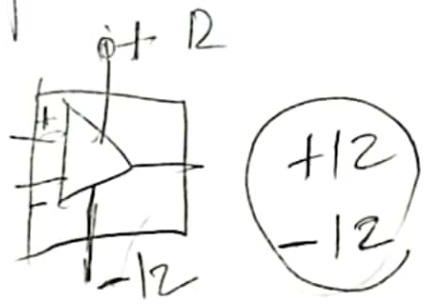
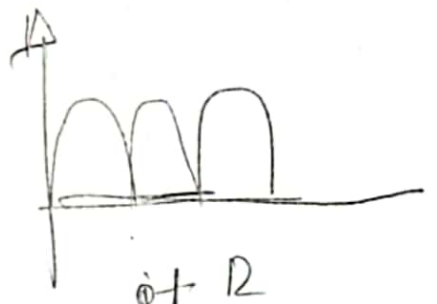
→ redresor in punte



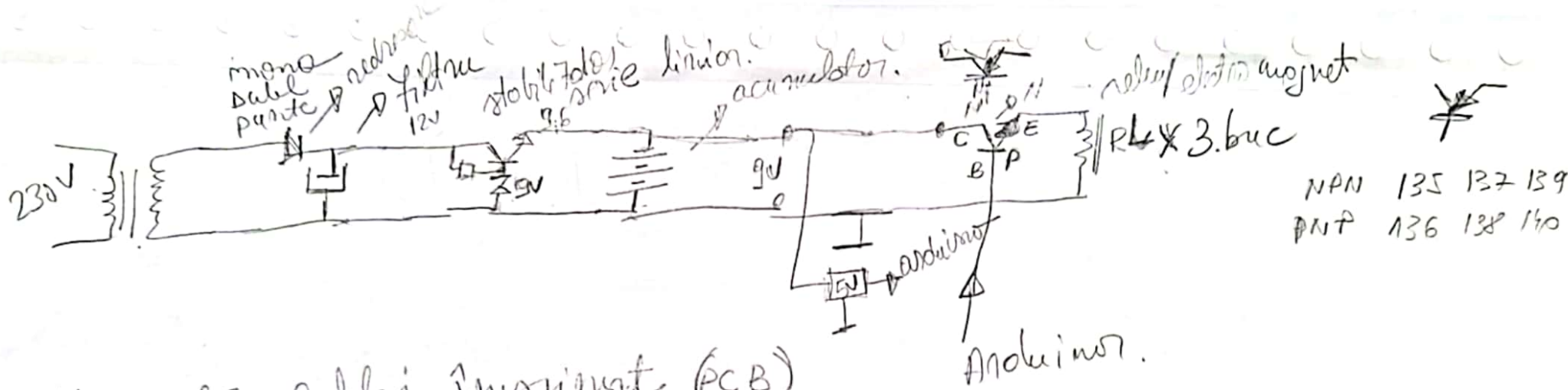
→ alternante



→ redresor dublu alternante



25H2 50Hz



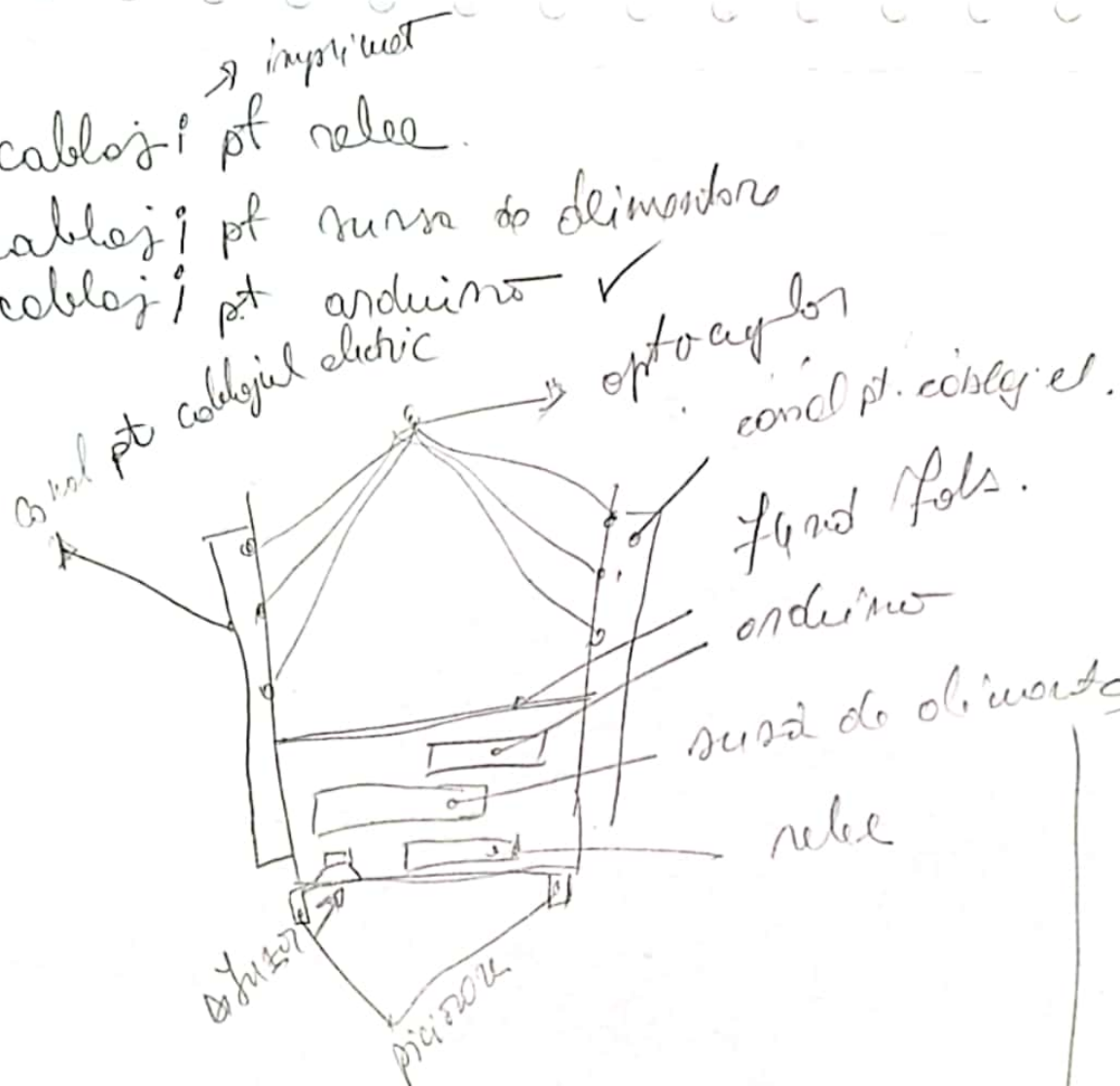
- Neuron:
- Căbleș imprimat (PCB)
  - cloușă fericeă (cavodată)
  - urmele seligotice / oșă / foaie de imprimant.
  - tranzistor și condensator relele
  - filtruș (într-o 1000μF --- 4700μF)
  - redresor (4x 1N4001 --- 4007.) (punte redresoare)
  - transformator 9V
  - sursă 7905
  - optocuplori
  - conector de alimentare
  - PIC ATMEGA 328P
  - Quartz. 16MHz.
  - MEGA 16U2.

RL



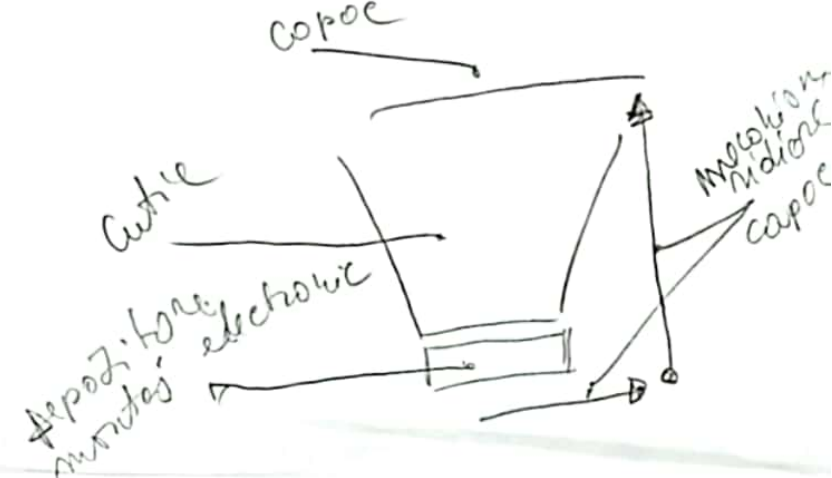
+ NPN  
- PNP

- cablozi pt relea
- cablozi pt surse de alimentare
- cablozi pt arduino ✓

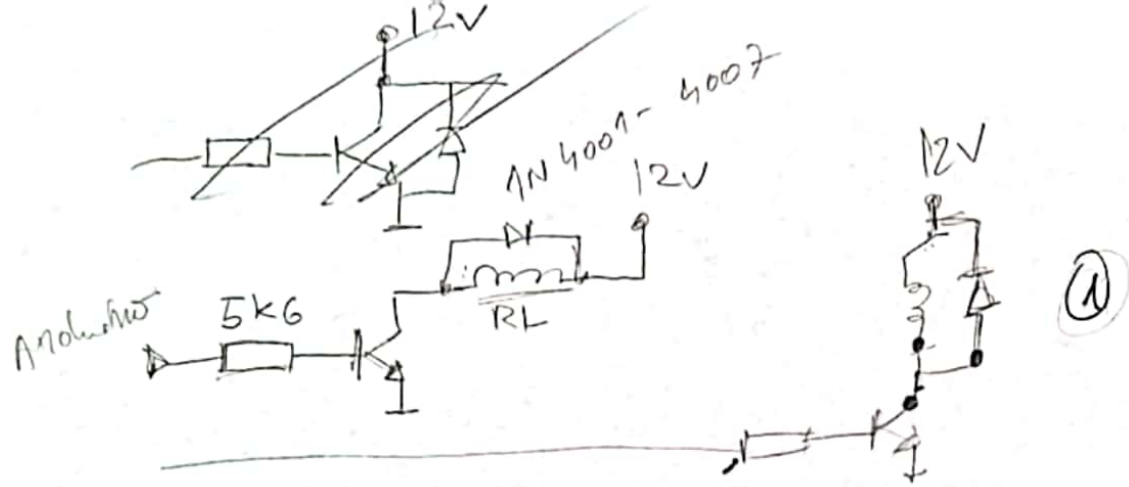


proiect mecanic  
- geantata

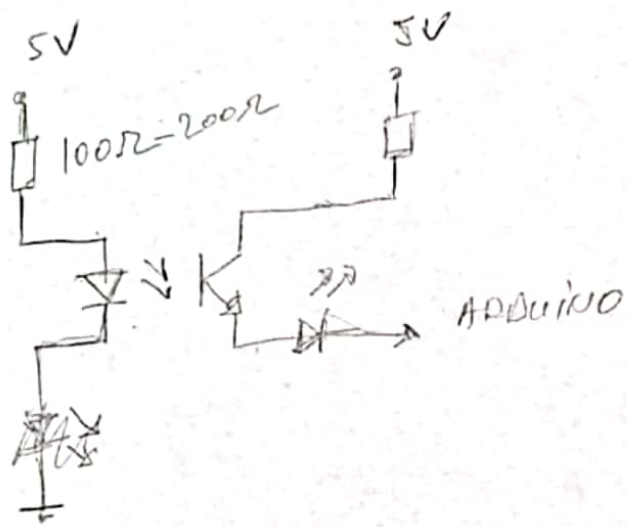
- copac
- cutie
- mecanism ridicare copac







①



optocoupler ②



E • B • C

